

General Description

FUEL INJECTION (FUEL SYSTEMS)

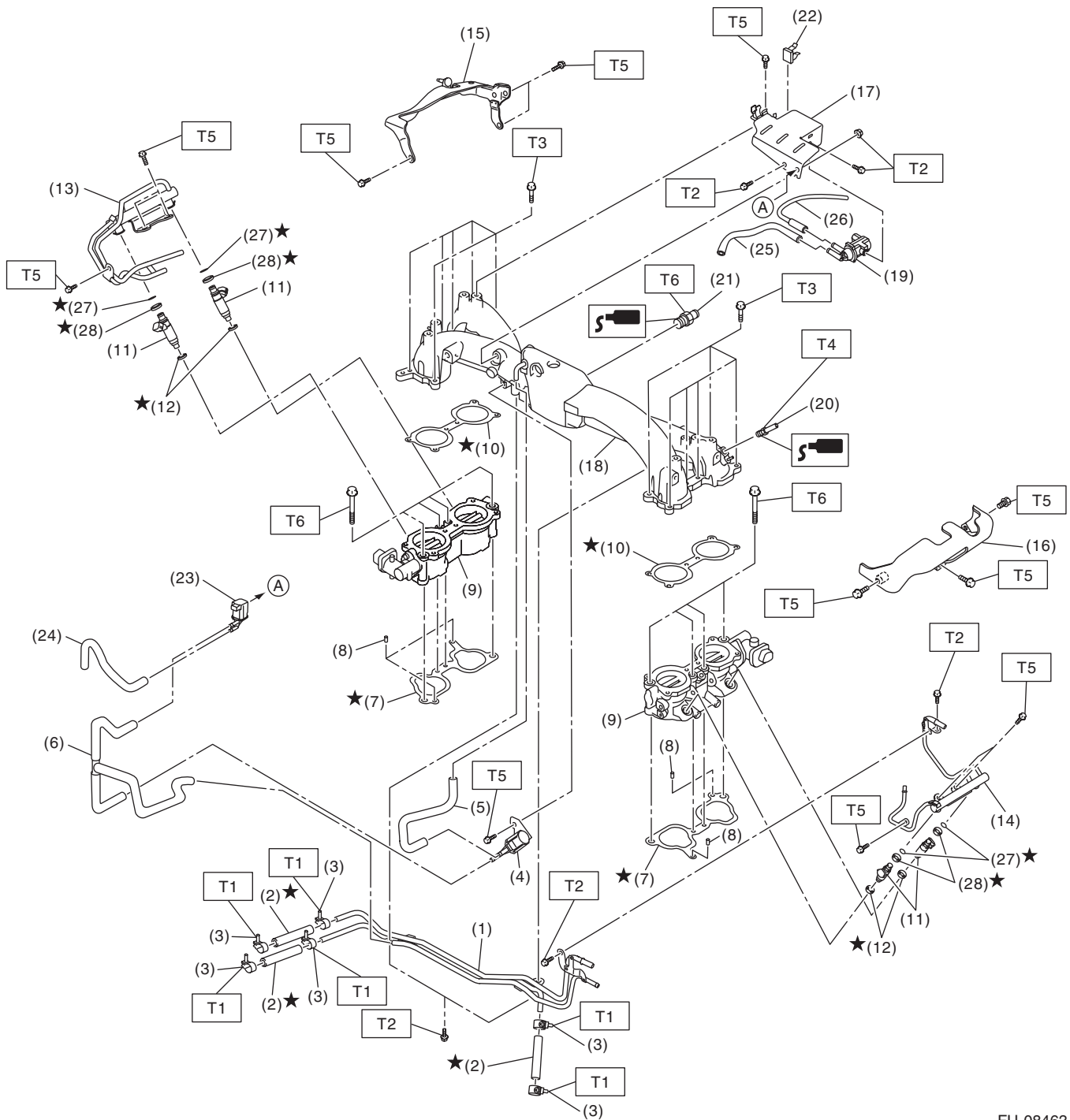
1. General Description

A: SPECIFICATION

Fuel tank	Capacity	60 L (15.9 US gal, 13.2 Imp gal)
	Location	Under rear seat
Fuel pump	Type	Impeller
	Shutoff discharge pressure	900 kPa (9.18 kg/cm ² , 130.5 psi) or less
	Discharge rate	175 L (46.2 US gal, 38.5 Imp gal)/h or more [12 V at 300 kPa (3.06 kg/cm ² , 43.5 psi)]
Fuel filter		In-tank type

B: COMPONENT

1. INTAKE MANIFOLD



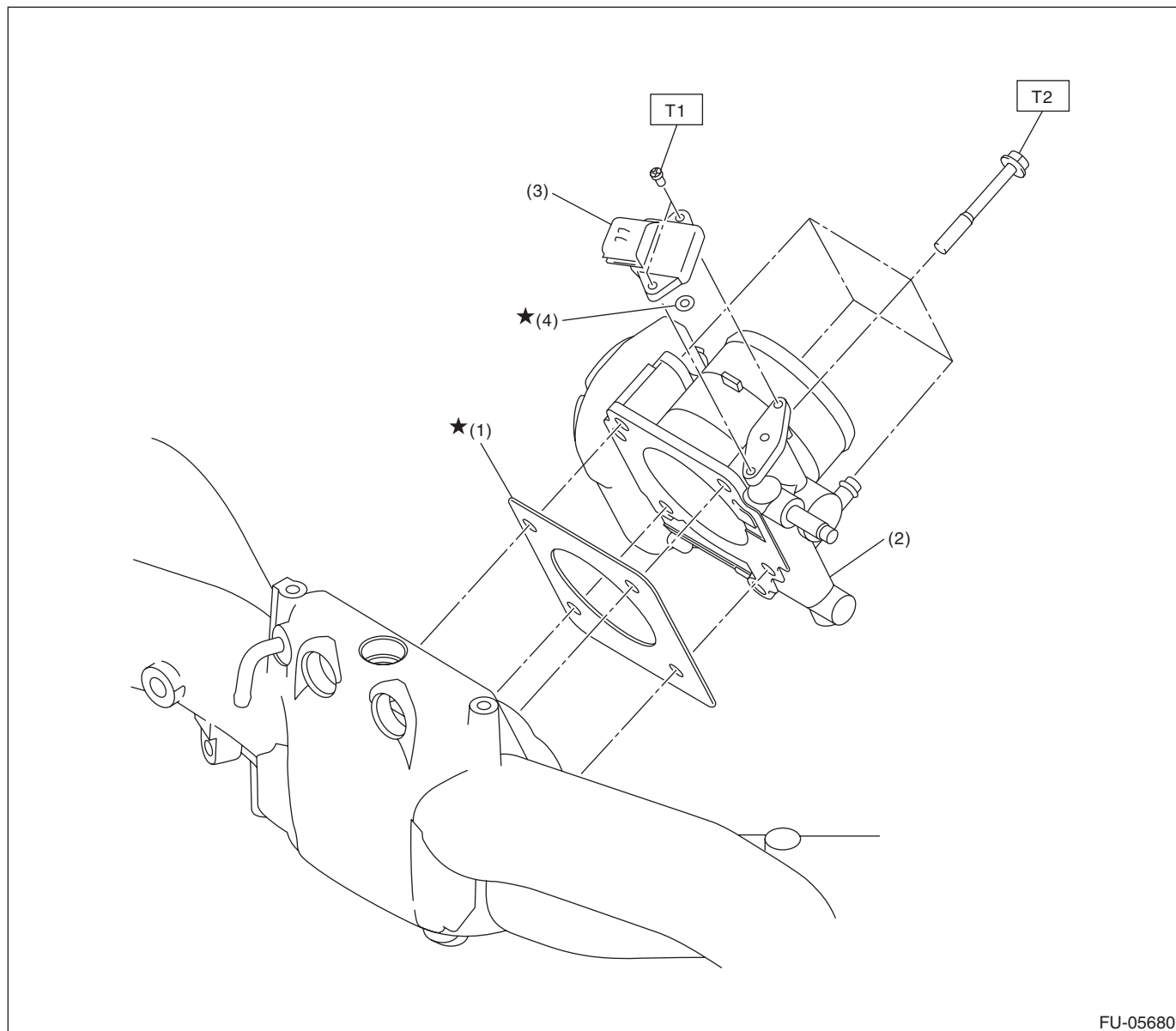
FU-08463

General Description

FUEL INJECTION (FUEL SYSTEMS)

(1) Fuel pipe ASSY	(13) Fuel injector pipe RH	(25) Vacuum hose
(2) Fuel hose	(14) Fuel injector pipe LH	(26) Air control hose
(3) Clamp	(15) Fuel pipe protector RH	(27) O-ring
(4) Purge control solenoid valve 1	(16) Fuel pipe protector LH	(28) Rubber
(5) Vacuum hose A	(17) Solenoid valve bracket	
(6) Vacuum control hose	(18) Intake manifold	<i>Tightening torque: N·m (kgf-m, ft-lb)</i>
(7) Intake manifold gasket	(19) Wastegate control solenoid valve	<i>T1: 1.25 (0.1, 0.9)</i>
(8) Guide pin	(20) Nipple	<i>T2: 6.4 (0.7, 4.7)</i>
(9) Tumble generator valve ASSY	(21) Nipple	<i>T3: 8.3 (0.8, 6.1)</i>
(10) Tumble generator valve gasket	(22) Clip	<i>T4: 17 (1.7, 12.5)</i>
(11) Fuel injector	(23) Purge control solenoid valve 2	<i>T5: 19 (1.9, 14.0)</i>
(12) Seal ring	(24) Vacuum hose	<i>T6: 25 (2.5, 18.4)</i>

2. AIR INTAKE SYSTEM



FU-05680

- | | |
|-------------------|---------------------------------------|
| (1) Gasket | (3) Manifold absolute pressure sensor |
| (2) Throttle body | (4) O-ring |

Tightening torque: N·m (kgf-m, ft-lb)

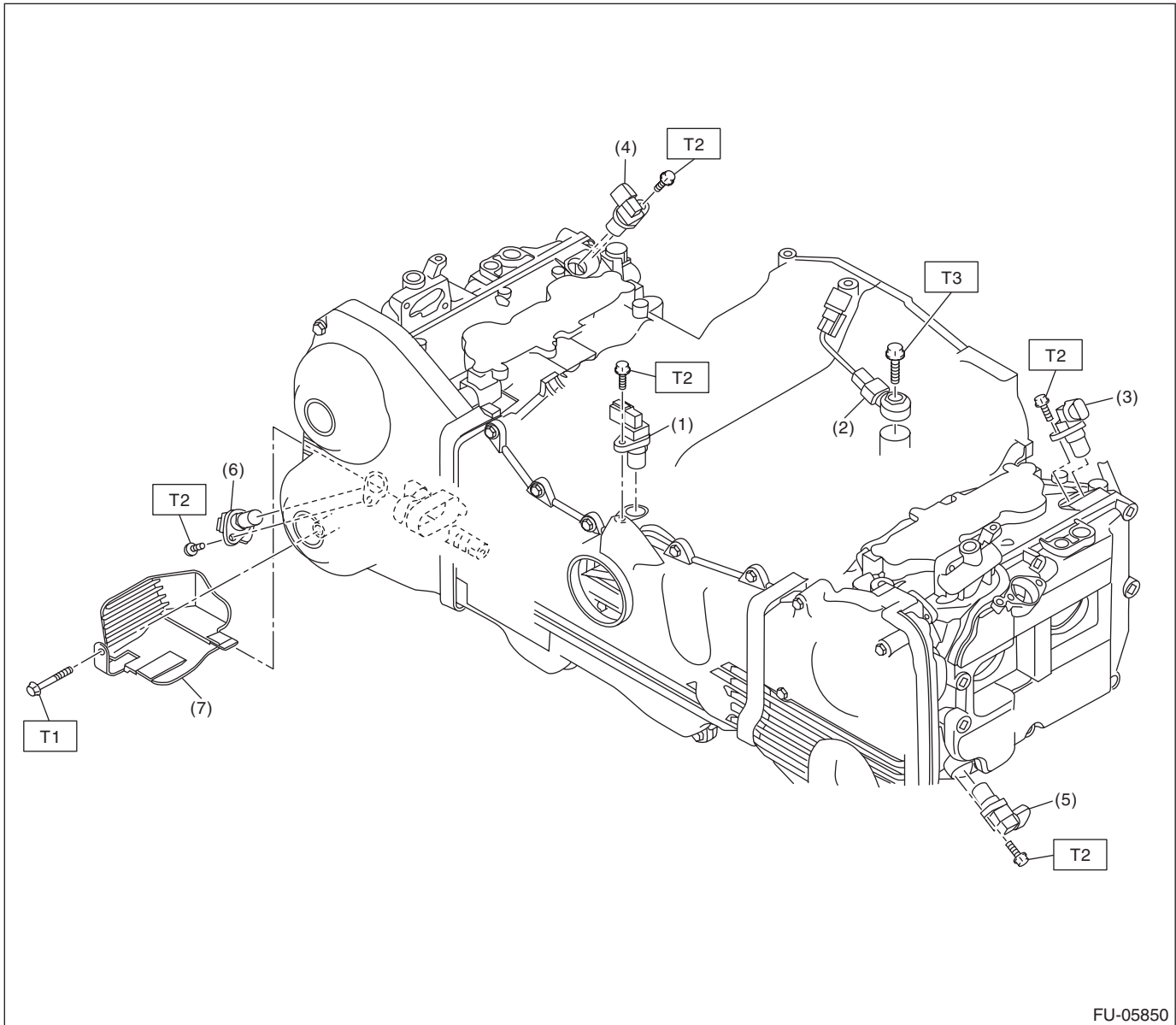
T1: 2 (0.2, 1.5)

T2: 8 (0.8, 5.9)

General Description

FUEL INJECTION (FUEL SYSTEMS)

3. CRANKSHAFT POSITION, CAMSHAFT POSITION AND KNOCK SENSORS



(1) Crankshaft position sensor

(5) Exhaust camshaft position sensor
LH

Tightening torque: N·m (kgf-m, ft-lb)

(2) Knock sensor

(6) Exhaust camshaft position sensor
RH

T1: 5 (0.5, 3.7)

(3) Intake camshaft position sensor
LH

(7) Engine harness cover

T2: 6.4 (0.7, 4.7)

(4) Intake camshaft position sensor
RH

T3: 24 (2.4, 17.7)

FUEL INJECTION (FUEL SYSTEMS)

[illegible]

FU(STI)-7

General Description

FUEL INJECTION (FUEL SYSTEMS)

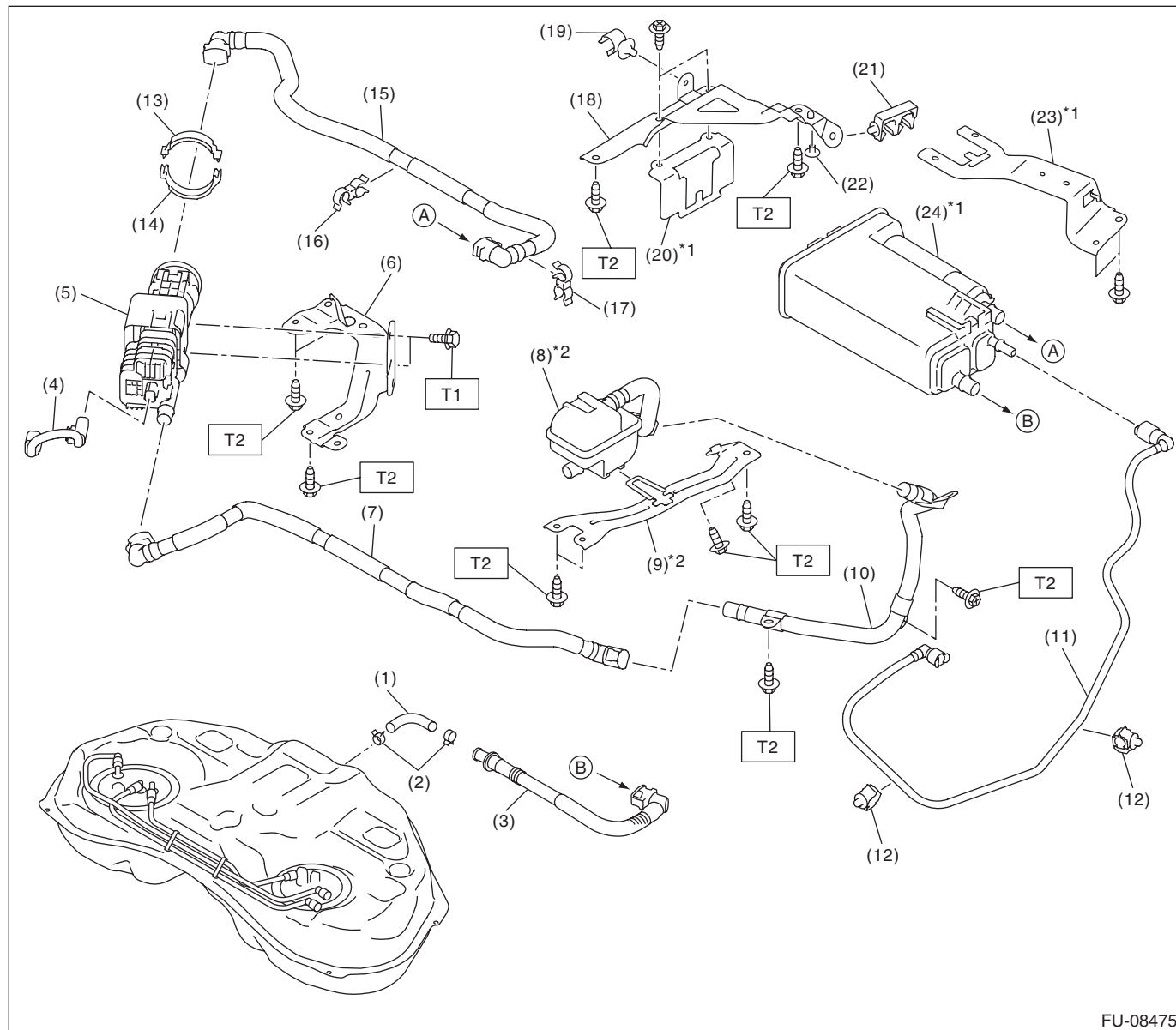
(1) Fuel tank	(15) Stopper LH	(29) Cushion
(2) Fuel tank band	(16) Heat shield cover	(30) Cushion
(3) Fuel delivery tube	(17) Fuel tank protector RH	(31) Cushion
(4) Jet pump tube	(18) Fuel tank protector LH	(32) Return tube
(5) Fuel pump ASSY	(19) Self-locking nut	(33) Retainer
(6) Fuel pump upper plate	(20) Rubber cap	
(7) Fuel pump gasket	(21) Fuel filler hose	<i>Tightening torque: N·m (kgf-m, ft-lb)</i>
(8) Fuel level sensor	(22) Clamp	<i>T1: 2 (0.2, 1.5)</i>
(9) Fuel sub level sensor	(23) Clamp	<i>T2: 2.5 (0.3, 1.8)</i>
(10) Fuel sub level sensor upper plate	(24) Evaporation hose	<i>T3: 9 (0.9, 6.6)</i>
(11) Fuel sub level sensor gasket	(25) Clip	<i>T4: 18 (1.8, 13.3)</i>
(12) Fuel sub level sensor filter	(26) Tube clamp	<i>T5: <Ref. to FU(w/o STI)-157, INSTALLATION, Fuel Tank.></i>
(13) Fuel sub level sensor protector	(27) Fuel pump upper plate cushion	<i>T6: <Ref. to FU(w/o STI)-171, INSTALLATION, Fuel Pump.></i>
(14) Stopper RH	(28) Fuel sub level sensor upper plate cushion	<i>T7: <Ref. to FU(w/o STI)-180, INSTALLATION, Fuel Sub Level Sensor.></i>

FUEL INJECTION (FUEL SYSTEMS)

General Description

FUEL INJECTION (FUEL SYSTEMS)

• Fuel line 2



- | | | |
|------------------------------|-------------------------|-------------------------|
| (1) Vent hose | (11) Purge tube | (20) Canister bracket B |
| (2) Clip | (12) Tube clamp | (21) Tube clamp |
| (3) Vent tube | (13) Clamp B | (22) Clip |
| (4) Harness | (14) Clamp A | (23) Canister bracket C |
| (5) Leak check valve ASSY | (15) Drain tube B | (24) Canister |
| (6) Leak check valve bracket | (16) Tube clamp | |
| (7) Drain tube A | (17) Tube clamp | |
| (8) Drain filter | (18) Canister bracket A | |
| (9) Drain bracket | (19) Tube clamp | |
| (10) Drain pipe | | |

Tightening torque: N·m (kgf-m, ft-lb)

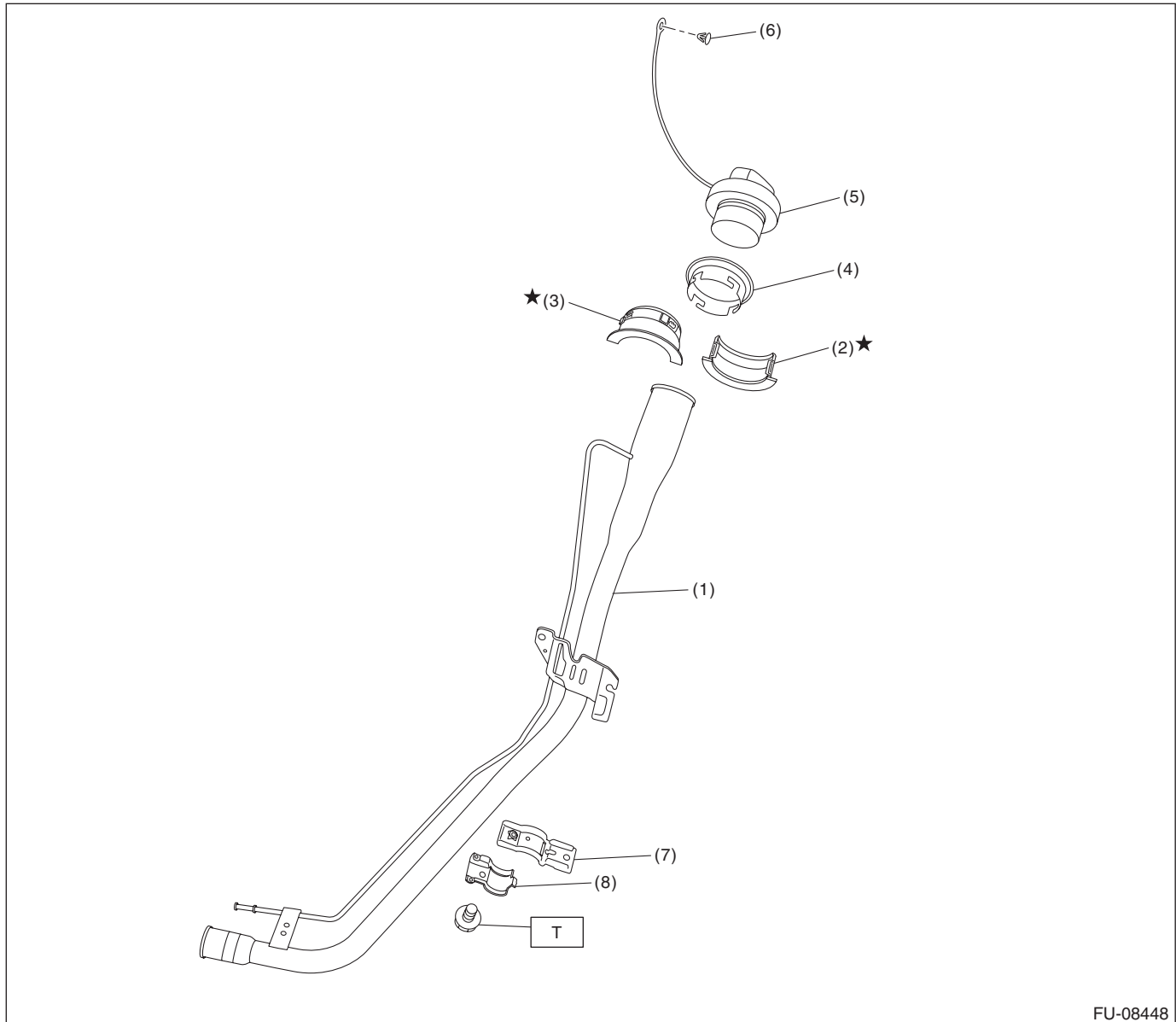
T1: 5.4 (0.6, 4.0)

T2: 7.5 (0.8, 5.5)

*1 The canister bracket cannot be separated from the canister. Therefore, be sure to replace both of them with new ones when replacing the canister or canister bracket.

*2 The drain filter cannot be separated from the drain bracket. Therefore, be sure to replace both of them with new ones when replacing the drain bracket or drain filter.

6. FUEL FILLER PIPE



FU-08448

- | | |
|--------------------------------|---------------------|
| (1) Fuel filler pipe ASSY | (5) Fuel filler cap |
| (2) Neck holder A | (6) Clip |
| (3) Neck holder B | (7) Upper bracket |
| (4) Fuel filler pipe protector | (8) Lower bracket |

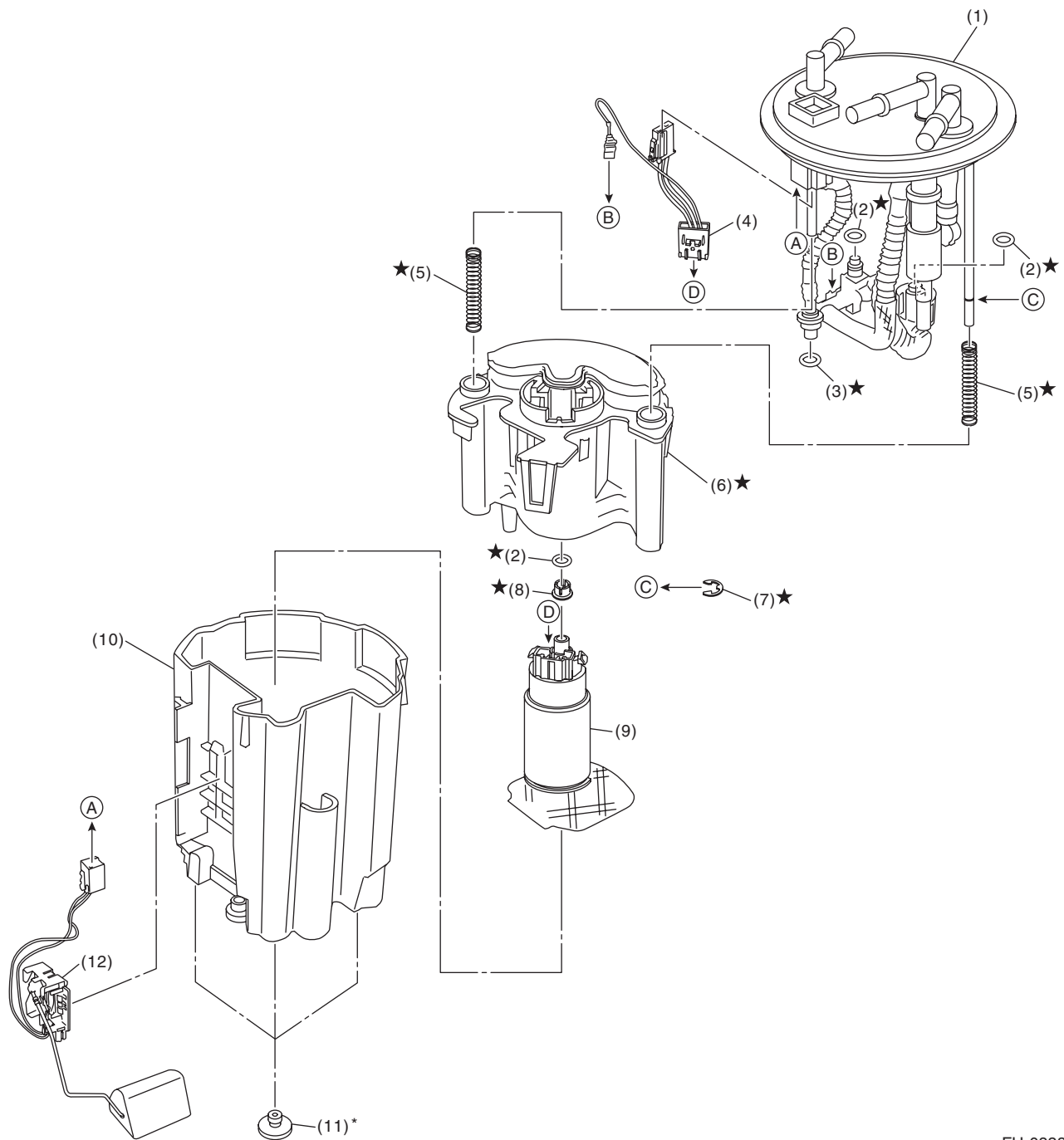
Tightening torque: N·m (kgf-m, ft-lb)

T: 7.35 (0.7, 5.4)

General Description

FUEL INJECTION (FUEL SYSTEMS)

7. FUEL PUMP



FU-08389

- | | | |
|---------------------------|-----------------|------------------------|
| (1) Sub tank bracket ASSY | (5) Spring | (9) Pump ASSY |
| (2) O-ring | (6) Fuel filter | (10) Sub tank |
| (3) O-ring | (7) Clip | (11) Cushion |
| (4) Fuel pump harness | (8) Spacer | (12) Fuel level sensor |

* When removing the cushion from the fuel chamber assembly, replace it with a new part.

C: CAUTION

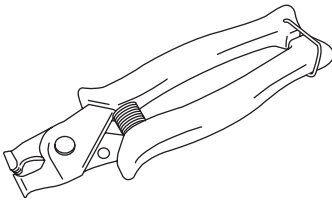
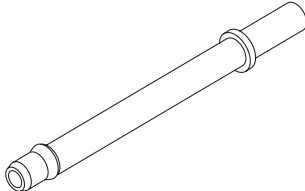
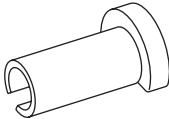
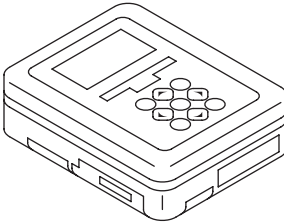
- Prior to starting work, pay special attention to the following:
 1. Always wear work clothes, a work cap, and protective shoes. Additionally, wear a helmet, protective goggles, etc. if necessary.
 2. Protect the vehicle using a seat cover, fender cover, etc.
 3. Prepare the service tools, clean cloth, containers to catch grease and oil, etc.
- Place “NO OPEN FLAMES” signs near the working area.
- Prepare a container and cloth to prevent scattering of fuels when performing work where fuels can be spilled. If the oil spills, wipe it off immediately to prevent from penetrating into floor or flowing out for environmental protection.
- Vehicle components are extremely hot immediately after driving. Be wary of receiving burns from heated parts.
- When performing a repair, identify the cause of trouble and avoid unnecessary removal, disassembly and replacement.
- Before disconnecting connectors of sensors or units, be sure to disconnect the ground cable from battery.
- Always use the jack-up point when the shop jacks or rigid racks are used to support the vehicle.
- Remove contamination including dirt and corrosion before removal, installation, disassembly or assembly.
- Keep the removed parts in order and protect them from dust and dirt.
- All removed parts, if to be reused, should be reinstalled in the original positions with attention to the correct directions, etc.
- Bolts, nuts and washers should be replaced with new parts as required.
- Follow all government and local regulations concerning disposal of refuse when disposing fuel.

General Description

FUEL INJECTION (FUEL SYSTEMS)

D: PREPARATION TOOL

1. SPECIAL TOOL

ILLUSTRATION	TOOL NUMBER	DESCRIPTION	REMARKS
 ST18353AA000	18353AA000	CLAMP PLIERS	<ul style="list-style-type: none"> Used for removing and installing the PCV hose. This tool is made by the French company CAILLAU. (code) 54.0.000.205 To make it easier to obtain, it has been provided with a tool number.
 ST18471AA000	18471AA000	FUEL PIPE ADAPTER	Used for draining fuel.
 ST42099AE000	42099AE000	QUICK CONNECTOR RELEASE	Used for removing the quick connector.
 ST1B022XU0	1B022XU0	SUBARU SELECT MONITOR III KIT	Used for draining fuel and each inspection.

2. GENERAL TOOL

TOOL NAME	REMARKS
Circuit tester	Used for measuring resistance and voltage.
Oscilloscope	Used for inspecting the waveform of each sensor.
Mighty Vac	Used for inspecting the manifold absolute pressure sensor.